



Land Information Centre  
Survey and Mapping Office, Lands Department  
© The Government of the Hong Kong Special Administrative Region  
Copyright reserved – reproduction by permission only

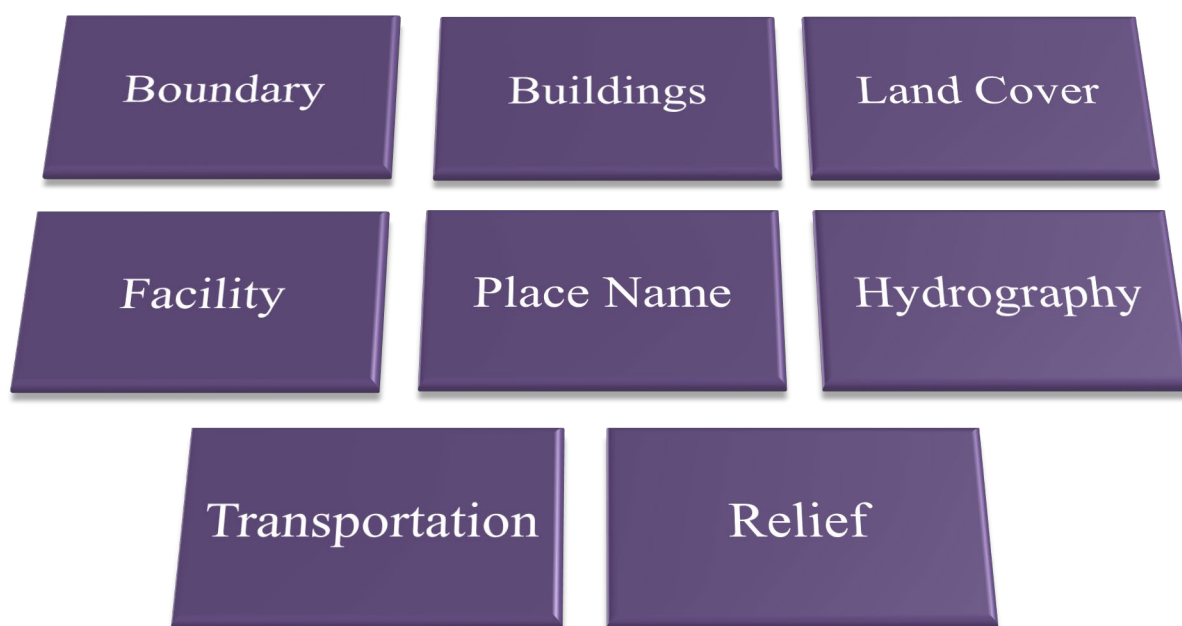
---

# iB50000 Data Dictionary

## Digital Topographic Map

GML (Version 3.1.1)

---



Date of Release: November 2024

Version: 1.2

Endorsed By:

Date:

Signed

CHOI Wai-man, Raymond  
(CLS/LIC)

6 September 2024

**(This page is intentionally left blank)**

## Amendment History

Version	Page	Amendments				
1.1 (OCT 2022)	I-3	<ul style="list-style-type: none"> <li>Update iB50000 Map Index</li> </ul>				
1.1 (OCT 2022)	V-55	<ul style="list-style-type: none"> <li>Update information for feature ELEVSYMBOL               <table border="1" style="margin-left: 20px; width: 80%;"> <thead> <tr> <th style="text-align: left;"><u>Field</u></th> <th style="text-align: left;"><u>Description</u></th> </tr> </thead> <tbody> <tr> <td>TRIGNAME</td> <td>Trigonometrical station number</td> </tr> </tbody> </table> </li> </ul>	<u>Field</u>	<u>Description</u>	TRIGNAME	Trigonometrical station number
<u>Field</u>	<u>Description</u>					
TRIGNAME	Trigonometrical station number					
1.2 (NOV 2024)	II-3	<ul style="list-style-type: none"> <li>Update Notes of iB50000 Digital Topographic Map</li> </ul>				
1.2 (NOV 2024)	IV-3 V	<ul style="list-style-type: none"> <li>Delete Feature Delete a feature Boundary Polygon (BDRYPOLY)</li> </ul>				
1.2 (NOV 2024)	IV-5,8 & 10 V-71	<ul style="list-style-type: none"> <li>Modify Workspace Table Delete the field in the GeoName table               <table border="1" style="margin-left: 20px; width: 80%;"> <thead> <tr> <th style="text-align: left;"><u>Field</u></th> <th style="text-align: left;"><u>Description</u></th> </tr> </thead> <tbody> <tr> <td>GEOREFCODE</td> <td>An identifier for spatial referencing</td> </tr> </tbody> </table> </li> </ul>	<u>Field</u>	<u>Description</u>	GEOREFCODE	An identifier for spatial referencing
<u>Field</u>	<u>Description</u>					
GEOREFCODE	An identifier for spatial referencing					

**(This page is intentionally left blank)**

# Table of Content

<b>Specification Scope</b>	<b>Page</b>
<b>Part I</b>	
iB50000 Map Index .....	I-1
<b>Part II</b>	
Notes of iB50000 Digital Topographic Map .....	II-1
<b>Part III</b>	
Summary of iB50000 Features .....	III-1
<b>Part IV</b>	
Entity Relationship Diagrams .....	IV-1
Boundary Class Relationships.....	IV-3
Buildings Class Relationships.....	IV-4
Facility Class Relationships .....	IV-5
Hydrography Class Relationships .....	IV-6
Landcover Class Relationships .....	IV-7
PlaceName Class Relationships .....	IV-8
Relief Class Relationships.....	IV-9
Transportation Class Relationships.....	IV-10
<b>Feature Catalog</b>	
<b>Part V</b>	
Description of iB50000 Features .....	V-1
FeatureBDRYANNO .....	V-3
FeatureBDRYLINE .....	V-5
Feature BLDGPOLY.....	V-9
FeatureFACIANNO .....	V-13
Feature FACILINE.....	V-15

---

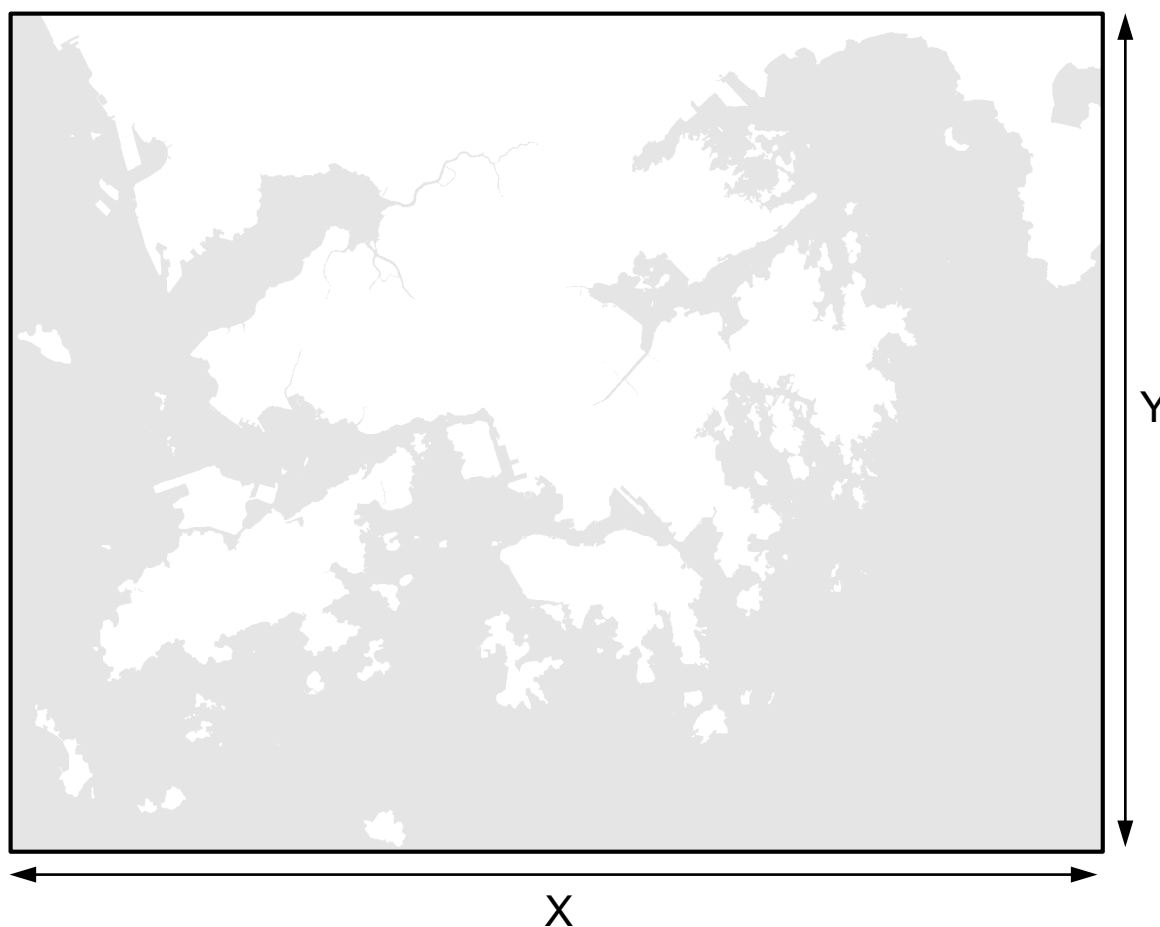
Feature FACIPOLY .....	V-19
Feature FACISYMBOL .....	V-23
FeatureHYDRANNO.....	V-25
Feature HYDRLINE .....	V-27
FeatureHYDRPOLY.....	V-31
Feature LANDPOLY .....	V-35
Feature PLACANNO .....	V-39
Feature ELEVANNO .....	V-41
FeatureELEVLINE .....	V-43
FeatureELEVPOLY.....	V-47
FeatureELEVSYMBOL.....	V-51
Feature TERRLINE.....	V-53
Feature TERRSYMBOL.....	V-57
Feature TSPTANNO.....	V-59
Feature TSPTLINE .....	V-61
Feature TSPTPOLY.....	V-65
Feature TSPTSYPMBOL.....	V-69
Table GeoName.....	V-71
Table Relationship_Table .....	V-75

# **Part I - iB50000 Map Index**

**(This page is intentionally left blank)**



### iB50000 Map Index



Note: Ground coverage

X = 77,758m

Y = 59,671m

**(This page is intentionally left blank)**

# **Part II - Notes of iB50000 Digital Topographic Map**

**(This page is intentionally left blank)**

## Notes of iB50000 Digital Topographic Map

### Grid System and Vertical Datum

Coordinates of the Digital Maps are in Hong Kong 1980 Grid (HK 1980 Grid) and which is a local rectangular grid system based on the HK80 Datum and Transverse Mercator projection. Heights are shown in metres above the Hong Kong Principal Datum (HKPD). For general reference, the Mean Sea Level is about 1.3 metres above the HKPD.

### Data Source

The spatial features of the small scale topographic data are mainly derived from the large scale topographic maps (e.g. 1:1000) with cartographic generalisation according to the respective map scales. The relevant attribute information is widely sourced from different government departments.

### GeoName

GeoName table stores a collection of names used in the iB50000 data. These names include place names, road names and facility names. The names are linked to feature classes and their annotations via a relationship table using GraphicID, GraphicDataset, AnnoSymID and GeoNameID. The xy coordinates, full English name and full Chinese name are also stored in the GeoName table. For the details, please refer to the ER-diagrams.

### Physical Status

The Physical Status field describes the status of presence of structural features or the availability of service associated with facilities features. For the values of this field, please refer to the relevant field values.

## Priority

The Priority field of features assigned with different code describes the relative vertical order of features. For the description of the codes, please refer to the relevant field values.

Code	Name
-1	Underground
0	On Ground
1	Suppressed
2	Under Structure/Under
3	Elevated / Over
4	Over Podium
5	Above Service Reservoir
6	Playground Above
23	Under Structure + Elevated
24	Under Structure + Over Podium
33	Elevated + Elevated

## Hong Kong Special Administrative Region Boundary

The boundary of Hong Kong Special Administrative Region is shown for general information only. Description is given in the Order of State Council of the People's Republic of China No. 221.

# **Part III - Summary of iB50000 Features**

**(This page is intentionally left blank)**



## Summary of iB50000 Feature Classes

FEATURE NAME	CLASS	CLASS DESCRIPTION	TYPE	TYPE DESCRIPTION
BDRYANNO	ENC	Enclosed Area	CLA	Closed Area Boundary
	ENC	Enclosed Area	FRB	Firing Range Boundary
	ENC	Enclosed Area	MCA	Military Installation Closed Area
	ENF	Enforcement Limit	HBL	Harbour Limit
BDRYLINE	ADM	Boundary Line	SAR	HKSAR Boundary
	ENC	Enclosed Area	CLA	Closed Area Boundary
	ENC	Enclosed Area	FRB	Firing Range Boundary
	ENF	Enforcement Limit	HBL	Harbour Limit
BLDGPOLY	BLP	Building Structure	BLD	Building (Built-up)
	MBD	Minor Building	CGA	Cottage Area / Temporary Structure
FACIANNO	AQU	Aquatics	YAC	Boating / Yachting / Water Sports Centre
	BGD	Burial Ground	CEM	Cemetery
	CUF	Cultural Facility	SCU	Sculpture / Statue
	DRS	Drainage Service	PIP	Water Pipeline
	GAS	Fuel Service Installation	TNK	Gas Tank / Oil Tank / Kerosene Store
	RSF	Leisure Facility	AMK	Theme Park
	RSF	Leisure Facility	GCO	Golf Course
	RSF	Leisure Facility	PAR	Park
	RSF	Leisure Facility	RCO	Racecourse
	RSF	Leisure Facility	STD	Stadium
	RSF	Leisure Facility	ZOO	Zoo
	SCH	Educational	TEI	Post-Secondary
FACILINE	CEI	Cable/Electricity Installation	POW	Power Line with Pylon
	DRS	Drainage Service	PIP	Water Pipeline
	DRS	Drainage Service	WTL	Water Tunnel
FACIPOLY	DRS	Drainage Service	WTK	Water Tank / Treatment Works
	FAF	Facility Furniture	GCO	Golf Course
	FAF	Facility Furniture	PAR	Park
	FAF	Facility Furniture	SGD	Sports Ground / Football Field
	FAF	Facility Furniture	SGT	Racetrack
	GAS	Fuel Service Installation	TNK	Gas Tank / Oil Tank / Kerosene Store

FEATURE NAME	CLASS	CLASS DESCRIPTION	TYPE	TYPE DESCRIPTION
FACISYMBOL	CEI	Cable/Electricity Installation	POW	Electricity Pylon
	UTI	Utility/Installation	SGN	Radio Transmitting Station / Television Transmitting Station / Signal Station / Wireless Station / Microwave Station
HYDRANNO	EWB	Water Body Name	RES	Reservoir Name
	SLN	Shore Alignment	RLE	Reclamation Limit Annotation
	STC	Stream	CAT	Catchwater
HYDRLINE	HYF	Hydrography Furniture	DAM	Dam
	HYF	Hydrography Furniture	JET	Jetty
	HYF	Hydrography Furniture	MAR	Floating Jetties
	SLN	Shore Alignment	BKW	Breakwater
	SLN	Shore Alignment	RLE	Reclamation Limit
	SLN	Shore Alignment	COA	Coastline
	STC	Stream	CAT	Catchwater
	STC	Stream	STM	Stream Course (major)
	STC	Stream	STO	Stream Course (open)
HYDRPOLY	EWB	Water Body	PON	Pond / Moat
	EWB	Water Body	RES	Reservoir
	EWB	Water Body	SEF	Sea Fill
	SLN	Shore Alignment	BKW	Breakwater
	SLN	Shore Alignment	RLE	Reclamation Limit
	STC	Stream	STO	Stream Course (open)
LANDPOLY	BRL	Barren Land	MUD	Mud Flat
	BRL	Barren Land	SAN	Sand
	VEG	Vegetation	CUL	Cultivation
	VEG	Vegetation	MAN	Mangrove
	VEG	Vegetation	SWA	Swamp / Marsh
	VEG	Vegetation	WOO	Woodland
PLACANNO	HYN	Hydrographic Name	BAY	Bay
	HYN	Hydrographic Name	RES	Reservoir Name
	HYN	Hydrographic Name	RIV	River Name
	ISN	Island_Name	ISL	Island
	MAS	Macro_Set_Name	DIS	District
	MAS	Macro_Set_Name	TOW	Town / New Town / Sub-district
	SET	Micro_Set_Name	EST	Estate
	SET	Micro_Set_Name	IST	Local Industrial Compound
	SET	Micro_Set_Name	SIT	Cargo handling Basin / Shipyard / Site Name
	SET	Micro_Set_Name	VIL	Village
	TON	Terrain_Name	HIL	Hill
TON	Terrain_Name	ROC	Rock	

FEATURE NAME	CLASS	CLASS DESCRIPTION	TYPE	TYPE DESCRIPTION
ELEVANNO	HGT	Height	SPT	Spot Height
	ISO	Isopleth	CNS	Contour Values
ELEVLIN	ISO	Isopleth	CNS	Contour Line
ELEVPOLY	BAT	Hypsometric Tinting	LAF	Land Fill
ELEVSYMBOL	HGT	Height	SPT	Spot Height
	SVM	Survey Monument	TRG	Trigonometric Station
TERRLINE	TRT	TerrainTop	CLF	Cliff Top / Quarry Top
TERRSYMBOL	TNF	Terrain Form	BOU	Boulder
TSPTANNO	MCY	Minor Carriageway	RUN	Runway
	RAI	Rail	CCR	Cable Car Rail
	RAI	Rail	MTR	Railway under construction
	RAI	Rail	PKT	Peak Tram Rail
	RDN	Street Naming	VDT	Viaduct Name
	RDN	Street Naming	RDN	Road Name
	RDN	Street Naming	TUN	Tunnel Name
	RTN	Route Name	RNO	Route Number (Highway Shield)
	TRS	Transportation	AIR	Airport
	TRS	Transportation	FER	Ferry Pier
	TRS	Transportation	FET	Ferry Terminal
TSPTLINE	HWR	Highway	EXP	Expressway
	HWR	Highway	MRD	Main Road
	HWR	Highway	NRD	Non-motorable Road
	HWR	Highway	SRD	Secondary Road (double)
	HWR	Highway	SRS	Secondary Road (single)
	HWR	Highway	URD	Unsurfaced Road / Track
	LTF	Light Throughfare	BRI	Footbridge
	LTF	Light Throughfare	FPI	Footpath
	MCY	Minor Carriageway	RUN	Runway
	RAI	Rail	CCR	Cable Car Rail
	RAI	Rail	HSR	High Speed Rail
	RAI	Rail	LRT	Light Rail
	RAI	Rail	MTR	Railway
	RAI	Rail	PKT	Peak Tram Rail
	RSN	Station	HSS	High Speed Rail Station
	RSN	Station	MTS	Railway Station
	RUT	Route	TAL	Trail
	TRF	Transportation Furniture	RCC	Vehicle Concourse
	TRF	Transportation Furniture	RDD	Road Divider

---

FEATURE NAME	CLASS	CLASS DESCRIPTION	TYPE	TYPE DESCRIPTION
TSPTPOLY	RSN	Station	PTI	Public Transport Interchange
TSPTSMBOL	RTN	Route Name	RNO	Route Number (Highway Shield)
	TRF	Transportation Furniture	NAU	Nautical Navigation Beacon
	TRF	Transportation Furniture	REA	Vehicular Restricted Access
	TRF	Transportation Furniture	TPO	Tunnel Portal

# **Part IV - Entity Relationship Diagrams**

**(This page is intentionally left blank)**

## Boundary Class Relationships

<b>BDRYLINE</b>
gml:id
GRAPHICID
GRAPHICDATASET
EASTING
NORTHING
CLASS
TYPE
SUBCAT
PRIORITY
PHYSICALSTATUS
SOURCE
LASTUPDATEDATE
gml:curveProperty
gml:multiCurveProperty

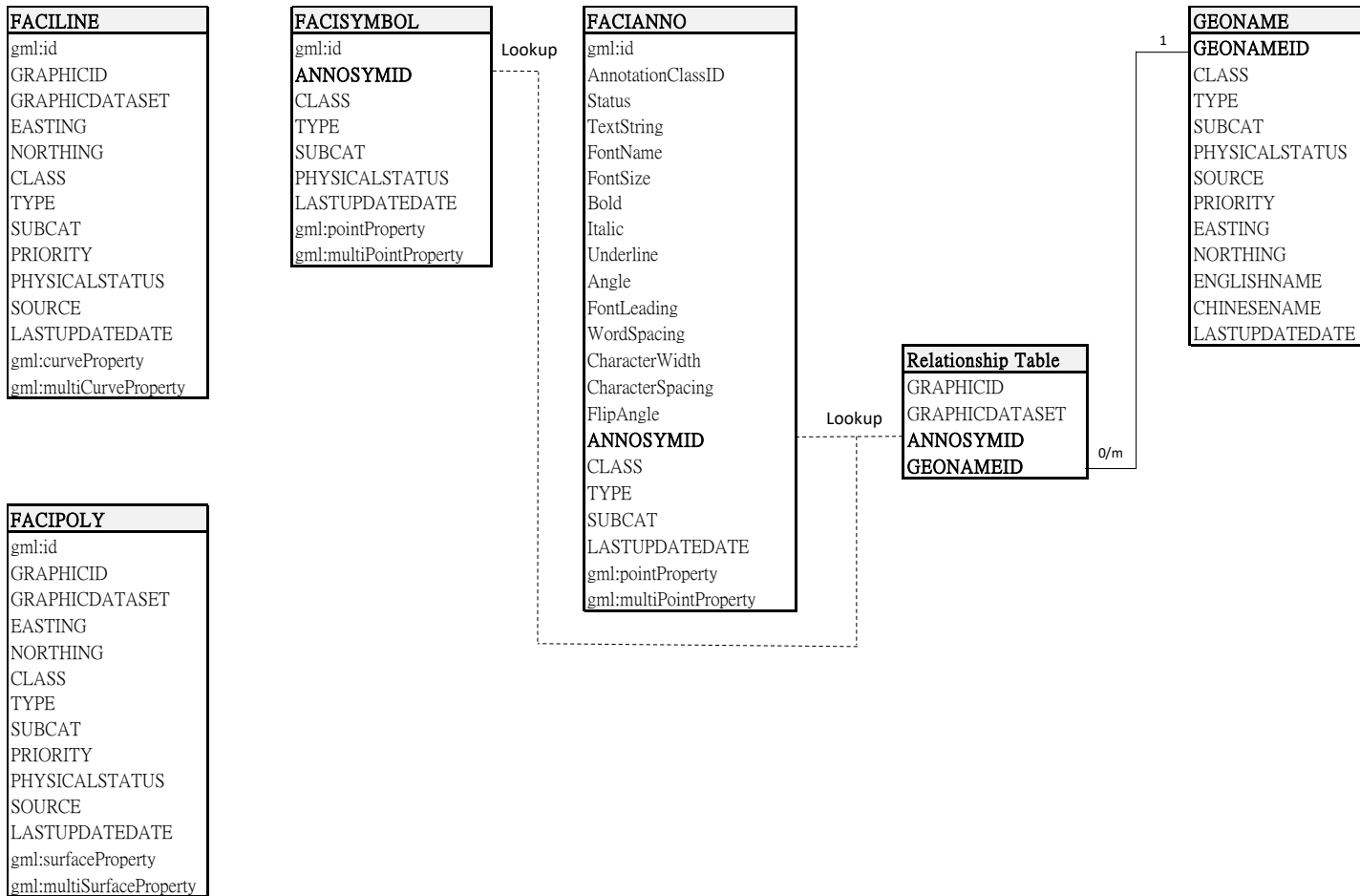
<b>BDRYANNO</b>
gml:id
AnnotationClassID
Status
TextString
FontName
FontSize
Bold
Italic
Underline
Angle
FontLeading
WordSpacing
CharacterWidth
CharacterSpacing
FlipAngle
ANNOSYMID
CLASS
TYPE
SUBCAT
LASTUPDATEDATE
gml:pointProperty
gml:multiPointProperty

**Buildings Class Relationships**

<b>BLDGPOLY</b>
gml:id
GRAPHICID
GRAPHICDATASET
EASTING
NORTHING
CLASS
TYPE
SUBCAT
PRIORITY
PHYSICALSTATUS
SOURCE
LASTUPDATEDATE
gml:surfaceProperty
gml:multiSurfaceProperty



### Facility Class Relationships



## Hydrography Class Relationships

HYDRLINE
gml:id
GRAPHICID
GRAPHICDATASET
EASTING
NORTHING
CLASS
TYPE
SUBCAT
PRIORITY
PHYSICALSTATUS
SOURCE
LASTUPDATEDATE
gml:curveProperty
gml:multiCurveProperty

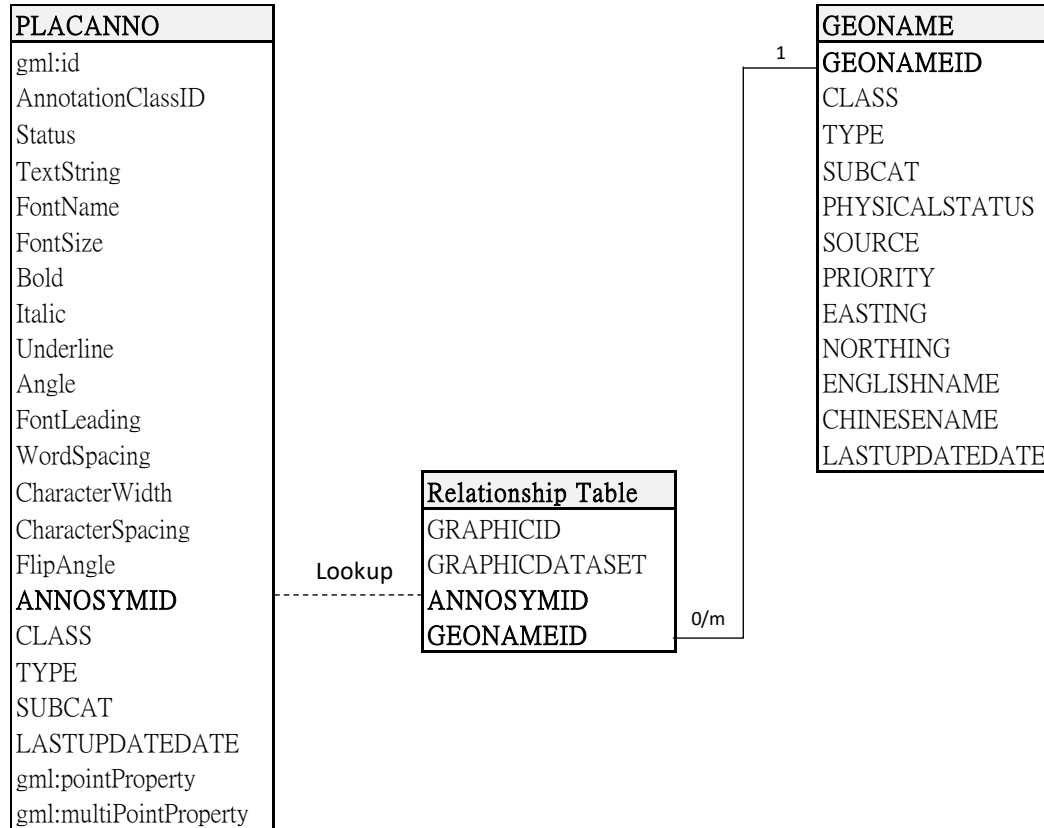
HYDRPOLY
gml:id
GRAPHICID
GRAPHICDATASET
EASTING
NORTHING
CLASS
TYPE
SUBCAT
PRIORITY
PHYSICALSTATUS
SOURCE
LASTUPDATEDATE
gml:surfaceProperty
gml:multiSurfaceProperty

HYDRANNO
gml:id
AnnotationClassID
Status
TextString
FontName
FontSize
Bold
Italic
Underline
Angle
FontLeading
WordSpacing
CharacterWidth
CharacterSpacing
FlipAngle
ANNOSYMID
CLASS
TYPE
SUBCAT
LASTUPDATEDATE
gml:pointProperty
gml:multiPointProperty

## Landcover Class Relationships

LANDPOLY
gml:id
GRAPHICID
GRAPHICDATASET
EASTING
NORTHING
CLASS
TYPE
SUBCAT
PRIORITY
PHYSICALSTATUS
SOURCE
LASTUPDATEDATE
gml:surfaceProperty
gml:multiSurfaceProperty

**PlaceName Class Relationships**



## Relief Class Relationships

<b>ELEVLIN</b>
gml:id
GRAPHICID
GRAPHICDATASET
EASTING
NORTHING
CLASS
TYPE
SUBCAT
PRIORITY
PHYSICALSTATUS
HEIGHT
SOURCE
LASTUPDATEDATE
gml:curveProperty
gml:multiCurveProperty

<b>TERRLINE</b>
gml:id
GRAPHICID
GRAPHICDATASET
EASTING
NORTHING
CLASS
TYPE
SUBCAT
PRIORITY
PHYSICALSTATUS
SOURCE
LASTUPDATEDATE
gml:curveProperty
gml:multiCurveProperty

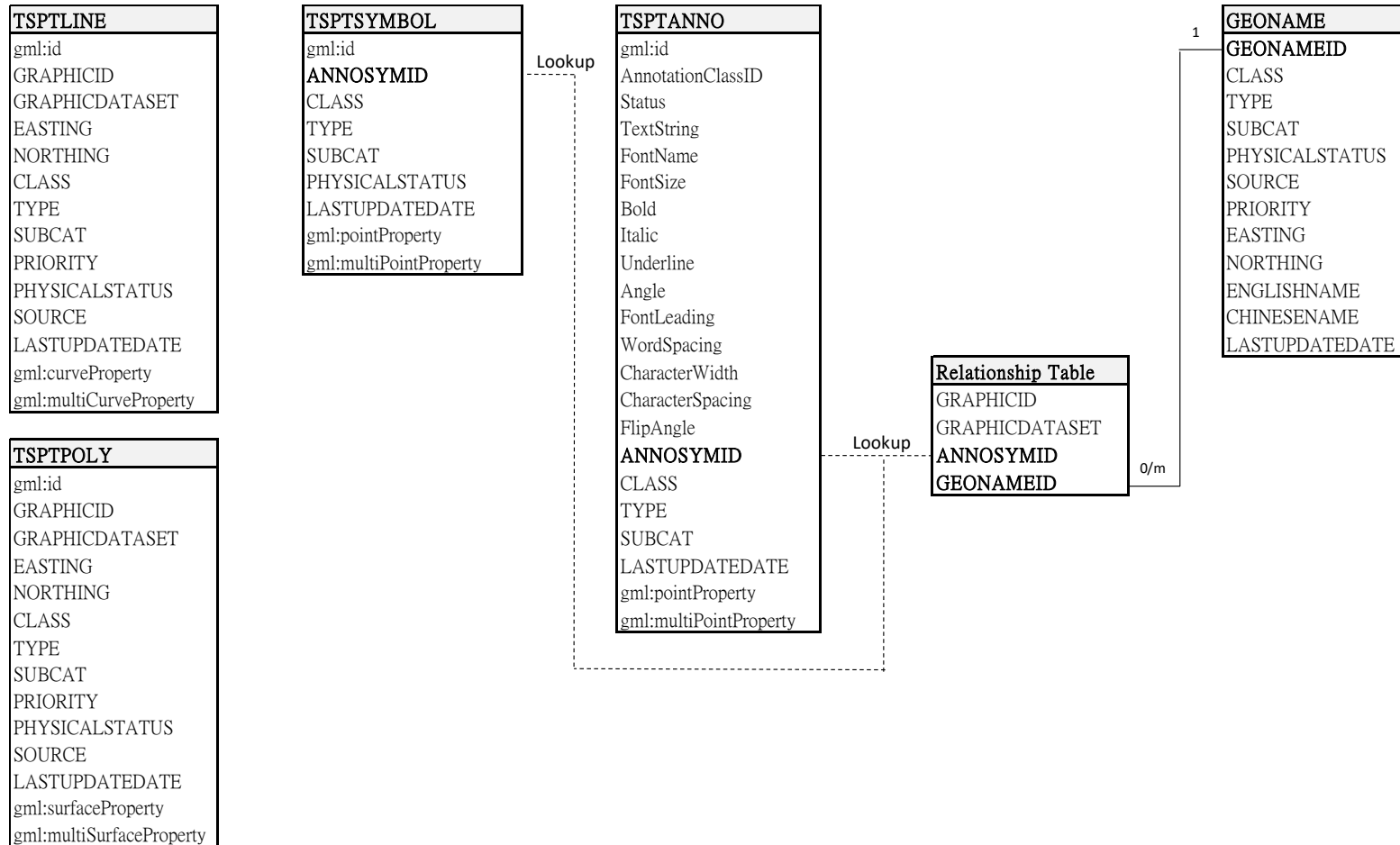
<b>TERRSYMBOL</b>
gml:id
ANNOSYMID
CLASS
TYPE
SUBCAT
PHYSICALSTATUS
LASTUPDATEDATE
gml:pointProperty
gml:multiPointProperty

<b>ELEVSYMBOL</b>
gml:id
ANNOSYMID
CLASS
TYPE
SUBCAT
PHYSICALSTATUS
HEIGHT
LASTUPDATEDATE
TRIGNAME
gml:pointProperty
gml:multiPointProperty

<b>ELEVANNO</b>
gml:id
AnnotationClassID
Status
TextString
FontName
FontSize
Bold
Italic
Underline
Angle
FontLeading
WordSpacing
CharacterWidth
CharacterSpacing
FlipAngle
ANNOSYMID
CLASS
TYPE
SUBCAT
LASTUPDATEDATE
gml:pointProperty
gml:multiPointProperty

<b>ELEVPOLY</b>
gml:id
GRAPHICID
GRAPHICDATASET
EASTING
NORTHING
CLASS
TYPE
SUBCAT
PRIORITY
PHYSICALSTATUS
SOURCE
LASTUPDATEDATE
gml:surfaceProperty
gml:multiSurfaceProperty

### Transportation Class Relationships



# **Part V - Description of iB50000 Features**

**(This page is intentionally left blank)**



**Feature**                    **BDRYANNO**  
**Geometry File**         BDRYANNO.gml  
**Schema File**            BDRYANNO.xsd  
**Description**            Chinese and English descriptions of boundary features.  
**Geometry Type**         Point

Field	Data Type	Length	Byte	Description	Default Value	Is Null
gml:id	String	64		A gml:id is a unique, not null string column used to identify record in table	--	False
AnnotationClassID	Int		4	Subtype for the annotation feature class	NULL	True
Status	Short		2	Flag indicating whether the annotation is placed or not	0	True
TextString	String	255		Display string of the annotation	NULL	True
FontName	String	255		Name of the font	NULL	True
FontSize	Double		8	Size of the font	NULL	True
Bold	Short		2	Flag indicating whether the font is bold or not	NULL	True
Italic	Short		2	Flag indicating whether the font is italic or not	NULL	True
Underline	Short		2	Flag indicating whether the font is underlined or not	NULL	True
Angle	Double		8	Rotation angle of the annotation	NULL	True
FontLeading	Double		8	Adjusts the spacing between lines	NULL	True
WordSpacing	Double		8	Adjusts the spacing between words	NULL	True
CharacterWidth	Double		8	Adjusts the character width	NULL	True
CharacterSpacing	Double		8	Adjusts the spacing between characters	NULL	True
FlipAngle	Double		8	Adjusts the angle at which point rotated text is flipped in place	NULL	True

Field	Data Type	Length	Byte	Description	Default Value	Is Null
ANNOSYMID	Int		4	An integer to identify annotation record in the feature dataset	NULL	True
CLASS	String	5		An attribute for feature classification	NULL	True
TYPE	String	5		An attribute for feature classification	NULL	True
SUBCAT	String	10		An attribute for sub-classification of feature into a precise type	NULL	True
LASTUPDATEDATE	String	20		Creation or last modification date of the record	NULL	True
gml:pointProperty	Geometry			The geometry type of the feature	NULL	True
gml:multiPointProperty	Geometry			The geometry type of the feature	NULL	True

### List of Field Values

Field	Code	Name
STATUS	0	Placed
	1	Unplaced
BOLD	0	No
	1	Yes
ITALIC	0	No
	1	Yes
UNDERLINE	0	No
	1	Yes

<b>Feature</b>	<b>BDRYLINE</b>
<b>Geometry File</b>	BDRYLINE.gml
<b>Schema File</b>	BDRYLINE.xsd
<b>Description</b>	A curve geometry storing the lines for boundary lines, enclosed areas and enforcement limits.
<b>Geometry Type</b>	Curve

Field	Data Type	Length	Byte	Description	Default Value	Is Null
gml:id	String	64		A gml:id is a unique, not null string column used to identify record in table	--	False
GRAPHICID	Int		4	An integer to identify line record in the feature dataset	NULL	True
GRAPHICDATASET	String	25		Graphical data from which feature dataset	NULL	True
EASTING	Double		8	Easting coordinate in HK 1980 Grid	NULL	True
NORTHING	Double		8	Northing coordinate in HK 1980 Grid	NULL	True
CLASS	String	5		An attribute for feature classification	NULL	True
TYPE	String	5		An attribute for feature classification	NULL	True
SUBCAT	String	10		An attribute for sub-classification of feature into a precise type	NULL	True
PRIORITY	short		2	An attribute to indicate level priority of the feature	NULL	True
PHYSICALSTATUS	Int		4	An attribute to indicate the physical status of the feature	NULL	True
SOURCE	short		2	Source of data in data collection or conversion	NULL	True
LASTUPDATEDATE	String	20		Creation or last modification date of the record	NULL	True
gml:curveProperty	Geometry			The geometry type of the feature	NULL	True
gml:multiCurveProperty	Geometry			The geometry type of the feature	NULL	True

**List of Field Values**

<b>Field</b>	<b>Code</b>	<b>Name</b>
PRIORITY	-1	Underground
	0	On Ground
	1	Suppressed
	2	Under Structure/Under
	3	Elevated / Over
	4	Over Podium
	5	Above Service Reservoir
	6	Playground Above
	23	Under Structure + Elevated
	24	Under Structure + Over Podium
	33	Elevated + Elevated
PHYSICALSTATUS	1	Proposed
	2	WIP
	3	Active
	4	Prop. Decommissioning
	5	Temp. Suspended
	6	Permanent Closed
	7	Demolished
SOURCE	1	Geodetic / GPS Data from Lands Department
	3	Gazetted / Deposited Information; Place Names approved by Geographical Place

Field	Code	Name
		Names Board
	4	Geographical Place Names in Hong Kong maintaining by Mapping Information Section, Lands Department
	5	1:1 000 Data
	6	Source from 1:1 000 Data with minor amendment in accordance with information from relevant authority
	7	GS Data / BS Data / Data verified by DSO
	8	Source from GS Data / BS Data with minor amendment in accordance with information from relevant authority
	9	DSO Cadastral Information
	10	M10 000 Mapping Database
	11	Photogrammetric Mapping Data
	13	Geo-Community Database maintaining by LIC
	14	Source from Geo_Community Database with minor amendment in accordance with information from relevant authority
	15	1:5 000 Data
	16	Source from 1:5 000 Data with minor amendment in accordance with information from relevant authority
	17	Ortho-rectified Data
	18	M50 000 Mapping Database
	19	M100 000 Mapping Database

Field	Code	Name
	20	Information from Chinese National Survey and Mapping Bureau
	21	M200 000 Mapping Database
	22	A-K Government Departments
	24	L-Z Government Departments
	26	Information from Government Related Organization
	27	Information from relevant private authority
	28	MISI Partner
	30	Conversion from 1:20 000 hard copy
	32	Low altitude photographic imagery
	34	High altitude photographic imagery
	36	Oblique photographic imagery
	40	Brochure, newspaper or magazine
	42	Local knowledge
	44	Publication from private sector (non-verified data)
	50	Telephone enquiry

**Feature BLDGPOLY****Geometry File** BLDGPOLY.gml**Schema File** BLDGPOLY.xsd**Description** A surface geometry storing the polygons for building structures and minor buildings.**Geometry Type** Surface

Field	Data Type	Length	Byte	Description	Default Value	Is Null
gml:id	String	64		A gml:id is a unique, not null string column used to identify record in table	--	False
GRAPHICID	Int		4	An integer to identify polygon record in the feature dataset	NULL	True
GRAPHICDATASET	String	25		Graphical data from which feature dataset	NULL	True
EASTING	Double		8	Easting coordinate in HK 1980 Grid	NULL	True
NORTHING	Double		8	Northing coordinate in HK 1980 Grid	NULL	True
CLASS	String	5		An attribute for feature classification	NULL	True
TYPE	String	5		An attribute for feature classification	NULL	True
SUBCAT	String	10		An attribute for sub-classification of feature into a precise type	NULL	True
PRIORITY	Short		2	An attribute to indicate level priority of the feature	NULL	True
PHYSICALSTATUS	Int		4	An attribute to indicate the physical status of the feature	NULL	True
SOURCE	Short		2	Source of data in data collection or conversion	NULL	True
LASTUPDATEDATE	String	20		Creation or last modification date of the record	NULL	True
gml:surfaceProperty	Geometry			The geometry type of the feature	NULL	True
gml:multiSurfaceProperty	Geometry			The geometry type of the feature	NULL	True

**List of Field Values**

<b>Field</b>	<b>Code</b>	<b>Name</b>
PRIORITY	-1	Underground
	0	On Ground
	1	Suppressed
	2	Under Structure/Under
	3	Elevated / Over
	4	Over Podium
	5	Above Service Reservoir
	6	Playground Above
	23	Under Structure + Elevated
	24	Under Structure + Over Podium
	33	Elevated + Elevated
PHYSICALSTATUS	1	Proposed
	2	WIP
	3	Active
	4	Prop. Decommissioning
	5	Temp. Suspended
	6	Permanent Closed
	7	Demolished
SOURCE	1	Geodetic / GPS Data from Lands Department
	3	Gazetted / Deposited Information; Place Names approved by Geographical Place



Field	Code	Name
		Names Board
	4	Geographical Place Names in Hong Kong maintaining by Mapping Information Section, Lands Department
	5	1:1 000 Data
	6	Source from 1:1 000 Data with minor amendment in accordance with information from relevant authority
	7	GS Data / BS Data / Data verified by DSO
	8	Source from GS Data / BS Data with minor amendment in accordance with information from relevant authority
	9	DSO Cadastral Information
	10	M10 000 Mapping Database
	11	Photogrammetric Mapping Data
	13	Geo-Community Database maintaining by LIC
	14	Source from Geo_Community Database with minor amendment in accordance with information from relevant authority
	15	1:5 000 Data
	16	Source from 1:5 000 Data with minor amendment in accordance with information from relevant authority
	17	Ortho-rectified Data
	18	M50 000 Mapping Database
	19	M100 000 Mapping Database

Field	Code	Name
	20	Information from Chinese National Survey and Mapping Bureau
	21	M200 000 Mapping Database
	22	A-K Government Departments
	24	L-Z Government Departments
	26	Information from Government Related Organization
	27	Information from relevant private authority
	28	MISI Partner
	30	Conversion from 1:20 000 hard copy
	32	Low altitude photographic imagery
	34	High altitude photographic imagery
	36	Oblique photographic imagery
	40	Brochure, newspaper or magazine
	42	Local knowledge
	44	Publication from private sector (non-verified data)
	50	Telephone enquiry

**Feature**                    **FACIANNO**  
**Geometry File**         FACIANNO.gml  
**Schema File**            FACIANNO.xsd  
**Description**            Chinese and English descriptions of facility features.  
**Geometry Type**         Point

Field	Data Type	Length	Byte	Description	Default Value	Is Null
gml:id	String	64		A gml:id is a unique, not null string column used to identify record in table	--	False
AnnotationClassID	Int		4	Subtype for the annotation feature class	NULL	True
Status	Short		2	Flag indicating whether the annotation is placed or not	0	True
TextString	String	255		Display string of the annotation	NULL	True
FontName	String	255		Name of the font	NULL	True
FontSize	Double		8	Size of the font	NULL	True
Bold	Short		2	Flag indicating whether the font is bold or not	NULL	True
Italic	Short		2	Flag indicating whether the font is italic or not	NULL	True
Underline	Short		2	Flag indicating whether the font is underlined or not	NULL	True
Angle	Double		8	Rotation angle of the annotation	NULL	True
FontLeading	Double		8	Adjusts the spacing between lines	NULL	True
WordSpacing	Double		8	Adjusts the spacing between words	NULL	True
CharacterWidth	Double		8	Adjusts the character width	NULL	True
CharacterSpacing	Double		8	Adjusts the spacing between characters	NULL	True
FlipAngle	Double		8	Adjusts the angle at which point rotated text is flipped in place	NULL	True

Field	Data Type	Length	Byte	Description	Default Value	Is Null
ANNOSYMID	Int		4	An integer to identify annotation record in the feature dataset	NULL	True
CLASS	String	5		An attribute for feature classification	NULL	True
TYPE	String	5		An attribute for feature classification	NULL	True
SUBCAT	String	10		An attribute for sub-classification of feature into a precise type	NULL	True
LASTUPDATEDATE	String	20		Creation or last modification date of the record	NULL	True
gml:pointProperty	Geometry			The geometry type of the feature	NULL	True
gml:multiPointProperty	Geometry			The geometry type of the feature	NULL	True

### List of Field Values

Field	Code	Name
STATUS	0	Placed
	1	Unplaced
BOLD	0	No
	1	Yes
ITALIC	0	No
	1	Yes
UNDERLINE	0	No
	1	Yes

<b>Feature</b>	<b>FACILINE</b>
<b>Geometry File</b>	FACILINE.gml
<b>Schema File</b>	FACILINE.xsd
<b>Description</b>	A curve geometry storing the lines for cable / electricity installations and drainage services.
<b>Geometry Type</b>	Curve

Field	Data Type	Length	Byte	Description	Default Value	Is Null
gml:id	String	64		A gml:id is a unique, not null string column used to identify record in table	--	False
GRAPHICID	Int		4	An integer to identify line record in the feature dataset	NULL	True
GRAPHICDATASET	String	25		Graphical data from which feature dataset	NULL	True
EASTING	Double		8	Easting coordinate in HK 1980 Grid	NULL	True
NORTHING	Double		8	Northing coordinate in HK 1980 Grid	NULL	True
CLASS	String	5		An attribute for feature classification	NULL	True
TYPE	String	5		An attribute for feature classification	NULL	True
SUBCAT	String	10		An attribute for sub-classification of feature into a precise type	NULL	True
PRIORITY	short		2	An attribute to indicate level priority of the feature	NULL	True
PHYSICALSTATUS	Int		4	An attribute to indicate the physical status of the feature	NULL	True
SOURCE	short		2	Source of data in data collection or conversion	NULL	True
LASTUPDATEDATE	String	20		Creation or last modification date of the record	NULL	True
gml:curveProperty	Geometry			The geometry type of the feature	NULL	True
gml:multiCurveProperty	Geometry			The geometry type of the feature	NULL	True

**List of Field Values**

<b>Field</b>	<b>Code</b>	<b>Name</b>
PRIORITY	-1	Underground
	0	On Ground
	1	Suppressed
	2	Under Structure/Under
	3	Elevated / Over
	4	Over Podium
	5	Above Service Reservoir
	6	Playground Above
	23	Under Structure + Elevated
	24	Under Structure + Over Podium
	33	Elevated + Elevated
PHYSICALSTATUS	1	Proposed
	2	WIP
	3	Active
	4	Prop. Decommissioning
	5	Temp. Suspended
	6	Permanent Closed
	7	Demolished
SOURCE	1	Geodetic / GPS Data from Lands Department
	3	Gazetted / Deposited Information; Place Names approved by Geographical Place

Field	Code	Name
		Names Board
	4	Geographical Place Names in Hong Kong maintaining by Mapping Information Section, Lands Department
	5	1:1 000 Data
	6	Source from 1:1 000 Data with minor amendment in accordance with information from relevant authority
	7	GS Data / BS Data / Data verified by DSO
	8	Source from GS Data / BS Data with minor amendment in accordance with information from relevant authority
	9	DSO Cadastral Information
	10	M10 000 Mapping Database
	11	Photogrammetric Mapping Data
	13	Geo-Community Database maintaining by LIC
	14	Source from Geo_Community Database with minor amendment in accordance with information from relevant authority
	15	1:5 000 Data
	16	Source from 1:5 000 Data with minor amendment in accordance with information from relevant authority
	17	Ortho-rectified Data
	18	M50 000 Mapping Database
	19	M100 000 Mapping Database

Field	Code	Name
	20	Information from Chinese National Survey and Mapping Bureau
	21	M200 000 Mapping Database
	22	A-K Government Departments
	24	L-Z Government Departments
	26	Information from Government Related Organization
	27	Information from relevant private authority
	28	MISI Partner
	30	Conversion from 1:20 000 hard copy
	32	Low altitude photographic imagery
	34	High altitude photographic imagery
	36	Oblique photographic imagery
	40	Brochure, newspaper or magazine
	42	Local knowledge
	44	Publication from private sector (non-verified data)
	50	Telephone enquiry



<b>Feature</b>	<b>FACIPOLY</b>
<b>Geometry File</b>	FACIPOLY.gml
<b>Schema File</b>	FACIPOLY.xsd
<b>Description</b>	A surface geometry storing the polygons for drainage services, facility furniture and fuel service installations.
<b>Geometry Type</b>	Surface

Field	Data Type	Length	Byte	Description	Default Value	Is Null
gml:id	String	64		A gml:id is a unique, not null string column used to identify record in table	--	False
GRAPHICID	Int		4	An integer to identify polygon record in the feature dataset	NULL	True
GRAPHICDATASET	String	25		Graphical data from which feature dataset	NULL	True
EASTING	Double		8	Easting coordinate in HK 1980 Grid	NULL	True
NORTHING	Double		8	Northing coordinate in HK 1980 Grid	NULL	True
CLASS	String	5		An attribute for feature classification	NULL	True
TYPE	String	5		An attribute for feature classification	NULL	True
SUBCAT	String	10		An attribute for sub-classification of feature into a precise type	NULL	True
PRIORITY	Short		2	An attribute to indicate level priority of the feature	NULL	True
PHYSICALSTATUS	Int		4	An attribute to indicate the physical status of the feature	NULL	True
SOURCE	Short		2	Source of data in data collection or conversion	NULL	True
LASTUPDATEDATE	String	20		Creation or last modification date of the record	NULL	True
gml:surfaceProperty	Geometry			The geometry type of the feature	NULL	True
gml:multiSurfaceProperty	Geometry			The geometry type of the feature	NULL	True

**List of Field Values**

<b>Field</b>	<b>Code</b>	<b>Name</b>
PRIORITY	-1	Underground
	0	On Ground
	1	Suppressed
	2	Under Structure/Under
	3	Elevated / Over
	4	Over Podium
	5	Above Service Reservoir
	6	Playground Above
	23	Under Structure + Elevated
	24	Under Structure + Over Podium
	33	Elevated + Elevated
PHYSICALSTATUS	1	Proposed
	2	WIP
	3	Active
	4	Prop. Decommissioning
	5	Temp. Suspended
	6	Permanent Closed
	7	Demolished
SOURCE	1	Geodetic / GPS Data from Lands Department
	3	Gazetted / Deposited Information; Place Names approved by Geographical Place

Field	Code	Name
		Names Board
	4	Geographical Place Names in Hong Kong maintaining by Mapping Information Section, Lands Department
	5	1:1 000 Data
	6	Source from 1:1 000 Data with minor amendment in accordance with information from relevant authority
	7	GS Data / BS Data / Data verified by DSO
	8	Source from GS Data / BS Data with minor amendment in accordance with information from relevant authority
	9	DSO Cadastral Information
	10	M10 000 Mapping Database
	11	Photogrammetric Mapping Data
	13	Geo-Community Database maintaining by LIC
	14	Source from Geo_Community Database with minor amendment in accordance with information from relevant authority
	15	1:5 000 Data
	16	Source from 1:5 000 Data with minor amendment in accordance with information from relevant authority
	17	Ortho-rectified Data
	18	M50 000 Mapping Database
	19	M100 000 Mapping Database

Field	Code	Name
	20	Information from Chinese National Survey and Mapping Bureau
	21	M200 000 Mapping Database
	22	A-K Government Departments
	24	L-Z Government Departments
	26	Information from Government Related Organization
	27	Information from relevant private authority
	28	MISI Partner
	30	Conversion from 1:20 000 hard copy
	32	Low altitude photographic imagery
	34	High altitude photographic imagery
	36	Oblique photographic imagery
	40	Brochure, newspaper or magazine
	42	Local knowledge
	44	Publication from private sector (non-verified data)
	50	Telephone enquiry

**Feature**                    **FACISYMBOL**  
**Geometry File**         FACISYMBOL.gml  
**Schema File**            FACISYMBOL.xsd  
**Description**            A point geometry storing the points for cable / electricity installations and utility installation.  
**Geometry Type**         Point

Field	Data Type	Length	Byte	Description	Default Value	Is Null
gml:id	String	64		A gml:id is a unique, not null string column used to identify record in table	--	False
ANNOSYMID	Int		4	An integer to identify point record in the feature dataset	NULL	True
CLASS	String	5		An attribute for feature classification	NULL	True
TYPE	String	5		An attribute for feature classification	NULL	True
SUBCAT	String	10		An attribute for sub-classification of feature into a precise type	NULL	True
PHYSICALSTATUS	Int		4	An attribute to indicate the physical status of the feature	NULL	True
LASTUPDATEDATE	String	20		Creation or last modification date of the record	NULL	True
gml:pointProperty	Geometry			The geometry type of the feature	NULL	True
gml:multiPointProperty	Geometry			The geometry type of the feature	NULL	True

**List of Field Values**

<b>Field</b>	<b>Code</b>	<b>Name</b>
PHYSICALSTATUS	1	Proposed
	2	WIP
	3	Active
	4	Prop. Decommissioning
	5	Temp. Suspended
	6	Permanent Closed
	7	Demolished

**Feature** HYDRANNO  
**Geometry File** HYDRANNO.gml  
**Schema File** HYDRANNO.xsd  
**Description** Chinese and English descriptions of hydrographic features.  
**Geometry Type** Point

Field	Data Type	Length	Byte	Description	Default Value	Is Null
gml:id	String	64		A gml:id is a unique, not null string column used to identify record in table	--	False
AnnotationClassID	Int		4	Subtype for the annotation feature class	NULL	True
Status	Short		2	Flag indicating whether the annotation is placed or not	0	True
TextString	String	255		Display string of the annotation	NULL	True
FontName	String	255		Name of the font	NULL	True
FontSize	Double		8	Size of the font	NULL	True
Bold	Short		2	Flag indicating whether the font is bold or not	NULL	True
Italic	Short		2	Flag indicating whether the font is italic or not	NULL	True
Underline	Short		2	Flag indicating whether the font is underlined or not	NULL	True
Angle	Double		8	Rotation angle of the annotation	NULL	True
FontLeading	Double		8	Adjusts the spacing between lines	NULL	True
WordSpacing	Double		8	Adjusts the spacing between words	NULL	True
CharacterWidth	Double		8	Adjusts the character width	NULL	True
CharacterSpacing	Double		8	Adjusts the spacing between characters	NULL	True
FlipAngle	Double		8	Adjusts the angle at which point rotated text is flipped in place	NULL	True

Field	Data Type	Length	Byte	Description	Default Value	Is Null
ANNOSYMID	Int		4	An integer to identify annotation record in the feature dataset	NULL	True
CLASS	String	5		An attribute for feature classification	NULL	True
TYPE	String	5		An attribute for feature classification	NULL	True
SUBCAT	String	10		An attribute for sub-classification of feature into a precise type	NULL	True
LASTUPDATEDATE	String	20		Creation or last modification date of the record	NULL	True
gml:pointProperty	Geometry			The geometry type of the feature	NULL	True
gml:multiPointProperty	Geometry			The geometry type of the feature	NULL	True

### List of Field Values

Field	Code	Name
STATUS	0	Placed
	1	Unplaced
BOLD	0	No
	1	Yes
ITALIC	0	No
	1	Yes
UNDERLINE	0	No
	1	Yes



<b>Feature</b>	<b>HYDRLINE</b>
<b>Geometry File</b>	HYDRLINE.gml
<b>Schema File</b>	HYDRLINE.xsd
<b>Description</b>	A curve geometry storing the lines for hydrographic furniture, shore alignments and streams.
<b>Geometry Type</b>	Curve

Field	Data Type	Length	Byte	Description	Default Value	Is Null
gml:id	String	64		A gml:id is a unique, not null string column used to identify record in table	--	False
GRAPHICID	Int		4	An integer to identify line record in the feature dataset	NULL	True
GRAPHICDATASET	String	25		Graphical data from which feature dataset	NULL	True
EASTING	Double		8	Easting coordinate in HK 1980 Grid	NULL	True
NORTHING	Double		8	Northing coordinate in HK 1980 Grid	NULL	True
CLASS	String	5		An attribute for feature classification	NULL	True
TYPE	String	5		An attribute for feature classification	NULL	True
SUBCAT	String	10		An attribute for sub-classification of feature into a precise type	NULL	True
PRIORITY	short		2	An attribute to indicate level priority of the feature	NULL	True
PHYSICALSTATUS	Int		4	An attribute to indicate the physical status of the feature	NULL	True
SOURCE	short		2	Source of data in data collection or conversion	NULL	True
LASTUPDATEDATE	String	20		Creation or last modification date of the record	NULL	True
gml:curveProperty	Geometry			The geometry type of the feature	NULL	True
gml:multiCurveProperty	Geometry			The geometry type of the feature	NULL	True

**List of Field Values**

<b>Field</b>	<b>Code</b>	<b>Name</b>
PRIORITY	-1	Underground
	0	On Ground
	1	Suppressed
	2	Under Structure/Under
	3	Elevated / Over
	4	Over Podium
	5	Above Service Reservoir
	6	Playground Above
	23	Under Structure + Elevated
	24	Under Structure + Over Podium
	33	Elevated + Elevated
PHYSICALSTATUS	1	Proposed
	2	WIP
	3	Active
	4	Prop. Decommissioning
	5	Temp. Suspended
	6	Permanent Closed
	7	Demolished
SOURCE	1	Geodetic / GPS Data from Lands Department
	3	Gazetted / Deposited Information; Place Names approved by Geographical Place

Field	Code	Name
		Names Board
	4	Geographical Place Names in Hong Kong maintaining by Mapping Information Section, Lands Department
	5	1:1 000 Data
	6	Source from 1:1 000 Data with minor amendment in accordance with information from relevant authority
	7	GS Data / BS Data / Data verified by DSO
	8	Source from GS Data / BS Data with minor amendment in accordance with information from relevant authority
	9	DSO Cadastral Information
	10	M10 000 Mapping Database
	11	Photogrammetric Mapping Data
	13	Geo-Community Database maintaining by LIC
	14	Source from Geo_Community Database with minor amendment in accordance with information from relevant authority
	15	1:5 000 Data
	16	Source from 1:5 000 Data with minor amendment in accordance with information from relevant authority
	17	Ortho-rectified Data
	18	M50 000 Mapping Database
	19	M100 000 Mapping Database

Field	Code	Name
	20	Information from Chinese National Survey and Mapping Bureau
	21	M200 000 Mapping Database
	22	A-K Government Departments
	24	L-Z Government Departments
	26	Information from Government Related Organization
	27	Information from relevant private authority
	28	MISI Partner
	30	Conversion from 1:20 000 hard copy
	32	Low altitude photographic imagery
	34	High altitude photographic imagery
	36	Oblique photographic imagery
	40	Brochure, newspaper or magazine
	42	Local knowledge
	44	Publication from private sector (non-verified data)
	50	Telephone enquiry

<b>Feature</b>	<b>HYDRPOLY</b>
<b>Geometry File</b>	HYDRPOLY.gml
<b>Schema File</b>	HYDRPOLY.xsd
<b>Description</b>	A surface geometry storing the polygons for water bodies, shore alignments and streams.
<b>Geometry Type</b>	Surface

Field	Data Type	Length	Byte	Description	Default Value	Is Null
gml:id	String	64		A gml:id is a unique, not null string column used to identify record in table	--	False
GRAPHICID	Int		4	An integer to identify polygon record in the feature dataset	NULL	True
GRAPHICDATASET	String	25		Graphical data from which feature dataset	NULL	True
EASTING	Double		8	Easting coordinate in HK 1980 Grid	NULL	True
NORTHING	Double		8	Northing coordinate in HK 1980 Grid	NULL	True
CLASS	String	5		An attribute for feature classification	NULL	True
TYPE	String	5		An attribute for feature classification	NULL	True
SUBCAT	String	10		An attribute for sub-classification of feature into a precise type	NULL	True
PRIORITY	Short		2	An attribute to indicate level priority of the feature	NULL	True
PHYSICALSTATUS	Int		4	An attribute to indicate the physical status of the feature	NULL	True
SOURCE	Short		2	Source of data in data collection or conversion	NULL	True
LASTUPDATEDATE	String	20		Creation or last modification date of the record	NULL	True
gml:surfaceProperty	Geometry			The geometry type of the feature	NULL	True
gml:multiSurfaceProperty	Geometry			The geometry type of the feature	NULL	True

**List of Field Values**

<b>Field</b>	<b>Code</b>	<b>Name</b>
PRIORITY	-1	Underground
	0	On Ground
	1	Suppressed
	2	Under Structure/Under
	3	Elevated / Over
	4	Over Podium
	5	Above Service Reservoir
	6	Playground Above
	23	Under Structure + Elevated
	24	Under Structure + Over Podium
	33	Elevated + Elevated
PHYSICALSTATUS	1	Proposed
	2	WIP
	3	Active
	4	Prop. Decommissioning
	5	Temp. Suspended
	6	Permanent Closed
	7	Demolished
SOURCE	1	Geodetic / GPS Data from Lands Department
	3	Gazetted / Deposited Information; Place Names approved by Geographical Place

Field	Code	Name
		Names Board
	4	Geographical Place Names in Hong Kong maintaining by Mapping Information Section, Lands Department
	5	1:1 000 Data
	6	Source from 1:1 000 Data with minor amendment in accordance with information from relevant authority
	7	GS Data / BS Data / Data verified by DSO
	8	Source from GS Data / BS Data with minor amendment in accordance with information from relevant authority
	9	DSO Cadastral Information
	10	M10 000 Mapping Database
	11	Photogrammetric Mapping Data
	13	Geo-Community Database maintaining by LIC
	14	Source from Geo_Community Database with minor amendment in accordance with information from relevant authority
	15	1:5 000 Data
	16	Source from 1:5 000 Data with minor amendment in accordance with information from relevant authority
	17	Ortho-rectified Data
	18	M50 000 Mapping Database
	19	M100 000 Mapping Database

Field	Code	Name
	20	Information from Chinese National Survey and Mapping Bureau
	21	M200 000 Mapping Database
	22	A-K Government Departments
	24	L-Z Government Departments
	26	Information from Government Related Organization
	27	Information from relevant private authority
	28	MISI Partner
	30	Conversion from 1:20 000 hard copy
	32	Low altitude photographic imagery
	34	High altitude photographic imagery
	36	Oblique photographic imagery
	40	Brochure, newspaper or magazine
	42	Local knowledge
	44	Publication from private sector (non-verified data)
	50	Telephone enquiry



<b>Feature</b>	<b>LANDPOLY</b>
<b>Geometry File</b>	LANDPOLY.gml
<b>Schema File</b>	LANDPOLY.xsd
<b>Description</b>	A surface geometry storing the polygons for barren land and vegetation.
<b>Geometry Type</b>	Surface

Field	Data Type	Length	Byte	Description	Default Value	Is Null
gml:id	String	64		A gml:id is a unique, not null string column used to identify record in table	--	False
GRAPHICID	Int		4	An integer to identify polygon record in the feature dataset	NULL	True
GRAPHICDATASET	String	25		Graphical data from which feature dataset	NULL	True
EASTING	Double		8	Easting coordinate in HK 1980 Grid	NULL	True
NORTHING	Double		8	Northing coordinate in HK 1980 Grid	NULL	True
CLASS	String	5		An attribute for feature classification	NULL	True
TYPE	String	5		An attribute for feature classification	NULL	True
SUBCAT	String	10		An attribute for sub-classification of feature into a precise type	NULL	True
PRIORITY	Short		2	An attribute to indicate level priority of the feature	NULL	True
PHYSICALSTATUS	Int		4	An attribute to indicate the physical status of the feature	NULL	True
SOURCE	Short		2	Source of data in data collection or conversion	NULL	True
LASTUPDATEDATE	String	20		Creation or last modification date of the record	NULL	True
gml:surfaceProperty	Geometry			The geometry type of the feature	NULL	True
gml:multiSurfaceProperty	Geometry			The geometry type of the feature	NULL	True

**List of Field Values**

<b>Field</b>	<b>Code</b>	<b>Name</b>
PRIORITY	-1	Underground
	0	On Ground
	1	Suppressed
	2	Under Structure/Under
	3	Elevated / Over
	4	Over Podium
	5	Above Service Reservoir
	6	Playground Above
	23	Under Structure + Elevated
	24	Under Structure + Over Podium
	33	Elevated + Elevated
PHYSICALSTATUS	1	Proposed
	2	WIP
	3	Active
	4	Prop. Decommissioning
	5	Temp. Suspended
	6	Permanent Closed
	7	Demolished
SOURCE	1	Geodetic / GPS Data from Lands Department
	3	Gazetted / Deposited Information; Place Names approved by Geographical Place

Field	Code	Name
		Names Board
	4	Geographical Place Names in Hong Kong maintaining by Mapping Information Section, Lands Department
	5	1:1 000 Data
	6	Source from 1:1 000 Data with minor amendment in accordance with information from relevant authority
	7	GS Data / BS Data / Data verified by DSO
	8	Source from GS Data / BS Data with minor amendment in accordance with information from relevant authority
	9	DSO Cadastral Information
	10	M10 000 Mapping Database
	11	Photogrammetric Mapping Data
	13	Geo-Community Database maintaining by LIC
	14	Source from Geo_Community Database with minor amendment in accordance with information from relevant authority
	15	1:5 000 Data
	16	Source from 1:5 000 Data with minor amendment in accordance with information from relevant authority
	17	Ortho-rectified Data
	18	M50 000 Mapping Database
	19	M100 000 Mapping Database

Field	Code	Name
	20	Information from Chinese National Survey and Mapping Bureau
	21	M200 000 Mapping Database
	22	A-K Government Departments
	24	L-Z Government Departments
	26	Information from Government Related Organization
	27	Information from relevant private authority
	28	MISI Partner
	30	Conversion from 1:20 000 hard copy
	32	Low altitude photographic imagery
	34	High altitude photographic imagery
	36	Oblique photographic imagery
	40	Brochure, newspaper or magazine
	42	Local knowledge
	44	Publication from private sector (non-verified data)
	50	Telephone enquiry

**Feature**                    **PLACANNO**  
**Geometry File**        PLACANNO.gml  
**Schema File**            PLACANNO.xsd  
**Description**            Chinese and English descriptions of place names.  
**Geometry Type**        Point

Field	Data Type	Length	Byte	Description	Default Value	Is Null
gml:id	String	64		A gml:id is a unique, not null string column used to identify record in table	--	False
AnnotationClassID	Int		4	Subtype for the annotation feature class	NULL	True
Status	Short		2	Flag indicating whether the annotation is placed or not	0	True
TextString	String	255		Display string of the annotation	NULL	True
FontName	String	255		Name of the font	NULL	True
FontSize	Double		8	Size of the font	NULL	True
Bold	Short		2	Flag indicating whether the font is bold or not	NULL	True
Italic	Short		2	Flag indicating whether the font is italic or not	NULL	True
Underline	Short		2	Flag indicating whether the font is underlined or not	NULL	True
Angle	Double		8	Rotation angle of the annotation	NULL	True
FontLeading	Double		8	Adjusts the spacing between lines	NULL	True
WordSpacing	Double		8	Adjusts the spacing between words	NULL	True
CharacterWidth	Double		8	Adjusts the character width	NULL	True
CharacterSpacing	Double		8	Adjusts the spacing between characters	NULL	True
FlipAngle	Double		8	Adjusts the angle at which point rotated text is flipped in place	NULL	True

Field	Data Type	Length	Byte	Description	Default Value	Is Null
ANNOSYMID	Int		4	An integer to identify annotation record in the feature dataset	NULL	True
CLASS	String	5		An attribute for feature classification	NULL	True
TYPE	String	5		An attribute for feature classification	NULL	True
SUBCAT	String	10		An attribute for sub-classification of feature into a precise type	NULL	True
LASTUPDATEDATE	String	20		Creation or last modification date of the record	NULL	True
gml:pointProperty	Geometry			The geometry type of the feature	NULL	True
gml:multiPointProperty	Geometry			The geometry type of the feature	NULL	True

### List of Field Values

Field	Code	Name
STATUS	0	Placed
	1	Unplaced
BOLD	0	No
	1	Yes
ITALIC	0	No
	1	Yes
UNDERLINE	0	No
	1	Yes

**Feature**                    **ELEVANNO**  
**Geometry File**         ELEVANNO.gml  
**Schema File**            ELEVANNO.xsd  
**Description**            Chinese and English descriptions of elevation features.  
**Geometry Type**         Point

Field	Data Type	Length	Byte	Description	Default Value	Is Null
gml:id	String	64		A gml:id is a unique, not null string column used to identify record in table	--	False
AnnotationClassID	Int		4	Subtype for the annotation feature class	NULL	True
Status	Short		2	Flag indicating whether the annotation is placed or not	0	True
TextString	String	255		Display string of the annotation	NULL	True
FontName	String	255		Name of the font	NULL	True
FontSize	Double		8	Size of the font	NULL	True
Bold	Short		2	Flag indicating whether the font is bold or not	NULL	True
Italic	Short		2	Flag indicating whether the font is italic or not	NULL	True
Underline	Short		2	Flag indicating whether the font is underlined or not	NULL	True
Angle	Double		8	Rotation angle of the annotation	NULL	True
FontLeading	Double		8	Adjusts the spacing between lines	NULL	True
WordSpacing	Double		8	Adjusts the spacing between words	NULL	True
CharacterWidth	Double		8	Adjusts the character width	NULL	True
CharacterSpacing	Double		8	Adjusts the spacing between characters	NULL	True
FlipAngle	Double		8	Adjusts the angle at which point rotated text is flipped in place	NULL	True

Field	Data Type	Length	Byte	Description	Default Value	Is Null
ANNOSYMID	Int		4	An integer to identify annotation record in the feature dataset	NULL	True
CLASS	String	5		An attribute for feature classification	NULL	True
TYPE	String	5		An attribute for feature classification	NULL	True
SUBCAT	String	10		An attribute for sub-classification of feature into a precise type	NULL	True
LASTUPDATEDATE	String	20		Creation or last modification date of the record	NULL	True
gml:pointProperty	Geometry			The geometry type of the feature	NULL	True
gml:multiPointProperty	Geometry			The geometry type of the feature	NULL	True

### List of Field Values

Field	Code	Name
STATUS	0	Placed
	1	Unplaced
BOLD	0	No
	1	Yes
ITALIC	0	No
	1	Yes
UNDERLINE	0	No
	1	Yes



**Feature** **ELEVLIN**  
**Geometry File** ELEVLIN.gml  
**Schema File** ELEVLIN.xsd  
**Description** A curve geometry storing the lines for contour lines.  
**Geometry Type** Curve

Field	Data Type	Length	Byte	Description	Default Value	Is Null
gml:id	String	64		A gml:id is a unique, not null string column used to identify record in table	--	False
GRAPHICID	Int		4	An integer to identify line record in the feature dataset	NULL	True
GRAPHICDATASET	String	25		Graphical data from which feature dataset	NULL	True
EASTING	Double		8	Easting coordinate in HK 1980 Grid	NULL	True
NORTHING	Double		8	Northing coordinate in HK 1980 Grid	NULL	True
CLASS	String	5		An attribute for feature classification	NULL	True
TYPE	String	5		An attribute for feature classification	NULL	True
SUBCAT	String	10		An attribute for sub-classification of feature into a precise type	NULL	True
PRIORITY	short		2	An attribute to indicate level priority of the feature	NULL	True
PHYSICALSTATUS	Int		4	An attribute to indicate the physical status of the feature	NULL	True
HEIGHT	Short		2	Elevation value for contour lines	NULL	True
SOURCE	short		2	Source of data in data collection or conversion	NULL	True
LASTUPDATEDATE	String	20		Creation or last modification date of the record	NULL	True
gml:curveProperty	Geometry			The geometry type of the feature	NULL	True
gml:multiCurveProperty	Geometry			The geometry type of the feature	NULL	True

**List of Field Values**

<b>Field</b>	<b>Code</b>	<b>Name</b>
PRIORITY	-1	Underground
	0	On Ground
	1	Suppressed
	2	Under Structure/Under
	3	Elevated / Over
	4	Over Podium
	5	Above Service Reservoir
	6	Playground Above
	23	Under Structure + Elevated
	24	Under Structure + Over Podium
	33	Elevated + Elevated
PHYSICALSTATUS	1	Proposed
	2	WIP
	3	Active
	4	Prop. Decommissioning
	5	Temp. Suspended
	6	Permanent Closed
	7	Demolished
SOURCE	1	Geodetic / GPS Data from Lands Department
	3	Gazetted / Deposited Information; Place Names approved by Geographical Place

Field	Code	Name
		Names Board
	4	Geographical Place Names in Hong Kong maintaining by Mapping Information Section, Lands Department
	5	1:1 000 Data
	6	Source from 1:1 000 Data with minor amendment in accordance with information from relevant authority
	7	GS Data / BS Data / Data verified by DSO
	8	Source from GS Data / BS Data with minor amendment in accordance with information from relevant authority
	9	DSO Cadastral Information
	10	M10 000 Mapping Database
	11	Photogrammetric Mapping Data
	13	Geo-Community Database maintaining by LIC
	14	Source from Geo_Community Database with minor amendment in accordance with information from relevant authority
	15	1:5 000 Data
	16	Source from 1:5 000 Data with minor amendment in accordance with information from relevant authority
	17	Ortho-rectified Data
	18	M50 000 Mapping Database
	19	M100 000 Mapping Database

Field	Code	Name
	20	Information from Chinese National Survey and Mapping Bureau
	21	M200 000 Mapping Database
	22	A-K Government Departments
	24	L-Z Government Departments
	26	Information from Government Related Organization
	27	Information from relevant private authority
	28	MISI Partner
	30	Conversion from 1:20 000 hard copy
	32	Low altitude photographic imagery
	34	High altitude photographic imagery
	36	Oblique photographic imagery
	40	Brochure, newspaper or magazine
	42	Local knowledge
	44	Publication from private sector (non-verified data)
	50	Telephone enquiry

**Feature** **ELEVPOLY**  
**Geometry File** ELEVPOLY.gml  
**Schema File** ELEVPOLY.xsd  
**Description** A surface geometry storing the hypsometric tinting.  
**Geometry Type** Surface

Field	Data Type	Length	Byte	Description	Default Value	Is Null
gml:id	String	64		A gml:id is a unique, not null string column used to identify record in table	--	False
GRAPHICID	Int		4	An integer to identify polygon record in the feature dataset	NULL	True
GRAPHICDATASET	String	25		Graphical data from which feature dataset	NULL	True
EASTING	Double		8	Easting coordinate in HK 1980 Grid	NULL	True
NORTHING	Double		8	Northing coordinate in HK 1980 Grid	NULL	True
CLASS	String	5		An attribute for feature classification	NULL	True
TYPE	String	5		An attribute for feature classification	NULL	True
SUBCAT	String	10		An attribute for sub-classification of feature into a precise type	NULL	True
PRIORITY	Short		2	An attribute to indicate level priority of the feature	NULL	True
PHYSICALSTATUS	Int		4	An attribute to indicate the physical status of the feature	NULL	True
SOURCE	Short		2	Source of data in data collection or conversion	NULL	True
LASTUPDATEDATE	String	20		Creation or last modification date of the record	NULL	True
gml:surfaceProperty	Geometry			The geometry type of the feature	NULL	True
gml:multiSurfaceProperty	Geometry			The geometry type of the feature	NULL	True

**List of Field Values**

<b>Field</b>	<b>Code</b>	<b>Name</b>
PRIORITY	-1	Underground
	0	On Ground
	1	Suppressed
	2	Under Structure/Under
	3	Elevated / Over
	4	Over Podium
	5	Above Service Reservoir
	6	Playground Above
	23	Under Structure + Elevated
	24	Under Structure + Over Podium
	33	Elevated + Elevated
PHYSICALSTATUS	1	Proposed
	2	WIP
	3	Active
	4	Prop. Decommissioning
	5	Temp. Suspended
	6	Permanent Closed
	7	Demolished
SOURCE	1	Geodetic / GPS Data from Lands Department
	3	Gazetted / Deposited Information; Place Names approved by Geographical Place

Field	Code	Name
		Names Board
	4	Geographical Place Names in Hong Kong maintaining by Mapping Information Section, Lands Department
	5	1:1 000 Data
	6	Source from 1:1 000 Data with minor amendment in accordance with information from relevant authority
	7	GS Data / BS Data / Data verified by DSO
	8	Source from GS Data / BS Data with minor amendment in accordance with information from relevant authority
	9	DSO Cadastral Information
	10	M10 000 Mapping Database
	11	Photogrammetric Mapping Data
	13	Geo-Community Database maintaining by LIC
	14	Source from Geo_Community Database with minor amendment in accordance with information from relevant authority
	15	1:5 000 Data
	16	Source from 1:5 000 Data with minor amendment in accordance with information from relevant authority
	17	Ortho-rectified Data
	18	M50 000 Mapping Database
	19	M100 000 Mapping Database

Field	Code	Name
	20	Information from Chinese National Survey and Mapping Bureau
	21	M200 000 Mapping Database
	22	A-K Government Departments
	24	L-Z Government Departments
	26	Information from Government Related Organization
	27	Information from relevant private authority
	28	MISI Partner
	30	Conversion from 1:20 000 hard copy
	32	Low altitude photographic imagery
	34	High altitude photographic imagery
	36	Oblique photographic imagery
	40	Brochure, newspaper or magazine
	42	Local knowledge
	44	Publication from private sector (non-verified data)
	50	Telephone enquiry



**Feature** **ELEVSYMBOL**  
**Geometry File** ELEVSYMBOL.gml  
**Schema File** ELEVSYMBOL.xsd  
**Description** A point geometry storing the points for height and survey monument.  
**Geometry Type** Point

Field	Data Type	Length	Byte	Description	Default Value	Is Null
gml:id	String	64		A gml:id is a unique, not null string column used to identify record in table	--	False
ANNOSYMID	Int		4	An integer to identify point record in the feature dataset	NULL	True
CLASS	String	5		An attribute for feature classification	NULL	True
TYPE	String	5		An attribute for feature classification	NULL	True
SUBCAT	String	10		An attribute for sub-classification of feature into a precise type	NULL	True
PHYSICALSTATUS	Int		4	An attribute to indicate the physical status of the feature	NULL	True
HEIGHT	Short		2	Elevation value rounded to the nearest metre	NULL	True
LASTUPDATEDATE	String	20		Creation or last modification date of the record	NULL	True
TRIGNAME	String	150		Trigonometrical station number	NULL	True
gml:pointProperty	Geometry			The geometry type of the feature	NULL	True
gml:multiPointProperty	Geometry			The geometry type of the feature	NULL	True

**List of Field Values**

<b>Field</b>	<b>Code</b>	<b>Name</b>
PHYSICALSTATUS	1	Proposed
	2	WIP
	3	Active
	4	Prop. Decommissioning
	5	Temp. Suspended
	6	Permanent Closed
	7	Demolished

<b>Feature</b>	<b>TERRLINE</b>
<b>Geometry File</b>	TERRLINE.gml
<b>Schema File</b>	TERRLINE.xsd
<b>Description</b>	A curve geometry storing the lines for terrain features.
<b>Geometry Type</b>	Curve

Field	Data Type	Length	Byte	Description	Default Value	Is Null
gml:id	String	64		A gml:id is a unique, not null string column used to identify record in table	--	False
GRAPHICID	Int		4	An integer to identify line record in the feature dataset	NULL	True
GRAPHICDATASET	String	25		Graphical data from which feature dataset	NULL	True
EASTING	Double		8	Easting coordinate in HK 1980 Grid	NULL	True
NORTHING	Double		8	Northing coordinate in HK 1980 Grid	NULL	True
CLASS	String	5		An attribute for feature classification	NULL	True
TYPE	String	5		An attribute for feature classification	NULL	True
SUBCAT	String	10		An attribute for sub-classification of feature into a precise type	NULL	True
PRIORITY	short		2	An attribute to indicate level priority of the feature	NULL	True
PHYSICALSTATUS	Int		4	An attribute to indicate the physical status of the feature	NULL	True
SOURCE	short		2	Source of data in data collection or conversion	NULL	True
LASTUPDATEDATE	String	20		Creation or last modification date of the record	NULL	True
gml:curveProperty	Geometry			The geometry type of the feature	NULL	True
gml:multiCurveProperty	Geometry			The geometry type of the feature	NULL	True

**List of Field Values**

<b>Field</b>	<b>Code</b>	<b>Name</b>
PRIORITY	-1	Underground
	0	On Ground
	1	Suppressed
	2	Under Structure/Under
	3	Elevated / Over
	4	Over Podium
	5	Above Service Reservoir
	6	Playground Above
	23	Under Structure + Elevated
	24	Under Structure + Over Podium
	33	Elevated + Elevated
PHYSICALSTATUS	1	Proposed
	2	WIP
	3	Active
	4	Prop. Decommissioning
	5	Temp. Suspended
	6	Permanent Closed
	7	Demolished
SOURCE	1	Geodetic / GPS Data from Lands Department
	3	Gazetted / Deposited Information; Place Names approved by Geographical Place

Field	Code	Name
		Names Board
	4	Geographical Place Names in Hong Kong maintaining by Mapping Information Section, Lands Department
	5	1:1 000 Data
	6	Source from 1:1 000 Data with minor amendment in accordance with information from relevant authority
	7	GS Data / BS Data / Data verified by DSO
	8	Source from GS Data / BS Data with minor amendment in accordance with information from relevant authority
	9	DSO Cadastral Information
	10	M10 000 Mapping Database
	11	Photogrammetric Mapping Data
	13	Geo-Community Database maintaining by LIC
	14	Source from Geo_Community Database with minor amendment in accordance with information from relevant authority
	15	1:5 000 Data
	16	Source from 1:5 000 Data with minor amendment in accordance with information from relevant authority
	17	Ortho-rectified Data
	18	M50 000 Mapping Database
	19	M100 000 Mapping Database

Field	Code	Name
	20	Information from Chinese National Survey and Mapping Bureau
	21	M200 000 Mapping Database
	22	A-K Government Departments
	24	L-Z Government Departments
	26	Information from Government Related Organization
	27	Information from relevant private authority
	28	MISI Partner
	30	Conversion from 1:20 000 hard copy
	32	Low altitude photographic imagery
	34	High altitude photographic imagery
	36	Oblique photographic imagery
	40	Brochure, newspaper or magazine
	42	Local knowledge
	44	Publication from private sector (non-verified data)
	50	Telephone enquiry

**Feature** TERRSYMBOL  
**Geometry File** TERRSYMBOL.gml  
**Schema File** TERRSYMBOL.xsd  
**Description** A point geometry storing the points for terrain features.  
**Geometry Type** Point

Field	Data Type	Length	Byte	Description	Default Value	Is Null
gml:id	String	64		A gml:id is a unique, not null string column used to identify record in table	--	False
ANNOSYMID	Int		4	An integer to identify point record in the feature dataset	NULL	True
CLASS	String	5		An attribute for feature classification	NULL	True
TYPE	String	5		An attribute for feature classification	NULL	True
SUBCAT	String	10		An attribute for sub-classification of feature into a precise type	NULL	True
PHYSICALSTATUS	Int		4	An attribute to indicate the physical status of the feature	NULL	True
LASTUPDATEDATE	String	20		Creation or last modification date of the record	NULL	True
gml:pointProperty	Geometry			The geometry type of the feature	NULL	True
gml:multiPointProperty	Geometry			The geometry type of the feature	NULL	True

**List of Field Values**

<b>Field</b>	<b>Code</b>	<b>Name</b>
PHYSICALSTATUS	1	Proposed
	2	WIP
	3	Active
	4	Prop. Decommissioning
	5	Temp. Suspended
	6	Permanent Closed
	7	Demolished



<b>Feature</b>	<b>TSPTANNO</b>
<b>Geometry File</b>	TSPTANNO.gml
<b>Schema File</b>	TSPTANNO.xsd
<b>Description</b>	Chinese and English descriptions of transportation features.
<b>Geometry Type</b>	Point

Field	Data Type	Length	Byte	Description	Default Value	Is Null
gml:id	String	64		A gml:id is a unique, not null string column used to identify record in table	--	False
AnnotationClassID	Int		4	Subtype for the annotation feature class	NULL	True
Status	Short		2	Flag indicating whether the annotation is placed or not	0	True
TextString	String	255		Display string of the annotation	NULL	True
FontName	String	255		Name of the font	NULL	True
FontSize	Double		8	Size of the font	NULL	True
Bold	Short		2	Flag indicating whether the font is bold or not	NULL	True
Italic	Short		2	Flag indicating whether the font is italic or not	NULL	True
Underline	Short		2	Flag indicating whether the font is underlined or not	NULL	True
Angle	Double		8	Rotation angle of the annotation	NULL	True
FontLeading	Double		8	Adjusts the spacing between lines	NULL	True
WordSpacing	Double		8	Adjusts the spacing between words	NULL	True
CharacterWidth	Double		8	Adjusts the character width	NULL	True
CharacterSpacing	Double		8	Adjusts the spacing between characters	NULL	True
FlipAngle	Double		8	Adjusts the angle at which point rotated text is flipped in place	NULL	True

Field	Data Type	Length	Byte	Description	Default Value	Is Null
ANNOSYMID	Int		4	An integer to identify annotation record in the feature dataset	NULL	True
CLASS	String	5		An attribute for feature classification	NULL	True
TYPE	String	5		An attribute for feature classification	NULL	True
SUBCAT	String	10		An attribute for sub-classification of feature into a precise type	NULL	True
LASTUPDATEDATE	String	20		Creation or last modification date of the record	NULL	True
gml:pointProperty	Geometry			The geometry type of the feature	NULL	True
gml:multiPointProperty	Geometry			The geometry type of the feature	NULL	True

### List of Field Values

Field	Code	Name
STATUS	0	Placed
	1	Unplaced
BOLD	0	No
	1	Yes
ITALIC	0	No
	1	Yes
UNDERLINE	0	No
	1	Yes

<b>Feature</b>	<b>TSPTLINE</b>
<b>Geometry File</b>	TSPTLINE.gml
<b>Schema File</b>	TSPTLINE.xsd
<b>Description</b>	A curve geometry storing the lines for highway, light thoroughfare, minor carriageway, rail, stations, route and transportation features.
<b>Geometry Type</b>	Curve

Field	Data Type	Length	Byte	Description	Default Value	Is Null
gml:id	String	64		A gml:id is a unique, not null string column used to identify record in table	--	False
GRAPHICID	Int		4	An integer to identify line record in the feature dataset	NULL	True
GRAPHICDATASET	String	25		Graphical data from which feature dataset	NULL	True
EASTING	Double		8	Easting coordinate in HK 1980 Grid	NULL	True
NORTHING	Double		8	Northing coordinate in HK 1980 Grid	NULL	True
CLASS	String	5		An attribute for feature classification	NULL	True
TYPE	String	5		An attribute for feature classification	NULL	True
SUBCAT	String	10		An attribute for sub-classification of feature into a precise type	NULL	True
PRIORITY	short		2	An attribute to indicate level priority of the feature	NULL	True
PHYSICALSTATUS	Int		4	An attribute to indicate the physical status of the feature	NULL	True
SOURCE	short		2	Source of data in data collection or conversion	NULL	True
LASTUPDATEDATE	String	20		Creation or last modification date of the record	NULL	True
gml:curveProperty	Geometry			The geometry type of the feature	NULL	True
gml:multiCurveProperty	Geometry			The geometry type of the feature	NULL	True

**List of Field Values**

<b>Field</b>	<b>Code</b>	<b>Name</b>
PRIORITY	-1	Underground
	0	On Ground
	1	Suppressed
	2	Under Structure/Under
	3	Elevated / Over
	4	Over Podium
	5	Above Service Reservoir
	6	Playground Above
	23	Under Structure + Elevated
	24	Under Structure + Over Podium
	33	Elevated + Elevated
PHYSICALSTATUS	1	Proposed
	2	WIP
	3	Active
	4	Prop. Decommissioning
	5	Temp. Suspended
	6	Permanent Closed
	7	Demolished
SOURCE	1	Geodetic / GPS Data from Lands Department
	3	Gazetted / Deposited Information; Place Names approved by Geographical Place

Field	Code	Name
		Names Board
	4	Geographical Place Names in Hong Kong maintaining by Mapping Information Section, Lands Department
	5	1:1 000 Data
	6	Source from 1:1 000 Data with minor amendment in accordance with information from relevant authority
	7	GS Data / BS Data / Data verified by DSO
	8	Source from GS Data / BS Data with minor amendment in accordance with information from relevant authority
	9	DSO Cadastral Information
	10	M10 000 Mapping Database
	11	Photogrammetric Mapping Data
	13	Geo-Community Database maintaining by LIC
	14	Source from Geo_Community Database with minor amendment in accordance with information from relevant authority
	15	1:5 000 Data
	16	Source from 1:5 000 Data with minor amendment in accordance with information from relevant authority
	17	Ortho-rectified Data
	18	M50 000 Mapping Database
	19	M100 000 Mapping Database

Field	Code	Name
	20	Information from Chinese National Survey and Mapping Bureau
	21	M200 000 Mapping Database
	22	A-K Government Departments
	24	L-Z Government Departments
	26	Information from Government Related Organization
	27	Information from relevant private authority
	28	MISI Partner
	30	Conversion from 1:20 000 hard copy
	32	Low altitude photographic imagery
	34	High altitude photographic imagery
	36	Oblique photographic imagery
	40	Brochure, newspaper or magazine
	42	Local knowledge
	44	Publication from private sector (non-verified data)
	50	Telephone enquiry

**Feature** TSPTPOLY  
**Geometry File** TSPTPOLY.gml  
**Schema File** TSPTPOLY.xsd  
**Description** A surface geometry storing the polygons for stations.  
**Geometry Type** Surface

Field	Data Type	Length	Byte	Description	Default Value	Is Null
gml:id	String	64		A gml:id is a unique, not null string column used to identify record in table	--	False
GRAPHICID	Int		4	An integer to identify polygon record in the feature dataset	NULL	True
GRAPHICDATASET	String	25		Graphical data from which feature dataset	NULL	True
EASTING	Double		8	Easting coordinate in HK 1980 Grid	NULL	True
NORTHING	Double		8	Northing coordinate in HK 1980 Grid	NULL	True
CLASS	String	5		An attribute for feature classification	NULL	True
TYPE	String	5		An attribute for feature classification	NULL	True
SUBCAT	String	10		An attribute for sub-classification of feature into a precise type	NULL	True
PRIORITY	Short		2	An attribute to indicate level priority of the feature	NULL	True
PHYSICALSTATUS	Int		4	An attribute to indicate the physical status of the feature	NULL	True
SOURCE	Short		2	Source of data in data collection or conversion	NULL	True
LASTUPDATEDATE	String	20		Creation or last modification date of the record	NULL	True
gml:surfaceProperty	Geometry			The geometry type of the feature	NULL	True
gml:multiSurfaceProperty	Geometry			The geometry type of the feature	NULL	True

**List of Field Values**

<b>Field</b>	<b>Code</b>	<b>Name</b>
PRIORITY	-1	Underground
	0	On Ground
	1	Suppressed
	2	Under Structure/Under
	3	Elevated / Over
	4	Over Podium
	5	Above Service Reservoir
	6	Playground Above
	23	Under Structure + Elevated
	24	Under Structure + Over Podium
	33	Elevated + Elevated
PHYSICALSTATUS	1	Proposed
	2	WIP
	3	Active
	4	Prop. Decommissioning
	5	Temp. Suspended
	6	Permanent Closed
	7	Demolished
SOURCE	1	Geodetic / GPS Data from Lands Department
	3	Gazetted / Deposited Information; Place Names approved by Geographical Place



Field	Code	Name
		Names Board
	4	Geographical Place Names in Hong Kong maintaining by Mapping Information Section, Lands Department
	5	1:1 000 Data
	6	Source from 1:1 000 Data with minor amendment in accordance with information from relevant authority
	7	GS Data / BS Data / Data verified by DSO
	8	Source from GS Data / BS Data with minor amendment in accordance with information from relevant authority
	9	DSO Cadastral Information
	10	M10 000 Mapping Database
	11	Photogrammetric Mapping Data
	13	Geo-Community Database maintaining by LIC
	14	Source from Geo_Community Database with minor amendment in accordance with information from relevant authority
	15	1:5 000 Data
	16	Source from 1:5 000 Data with minor amendment in accordance with information from relevant authority
	17	Ortho-rectified Data
	18	M50 000 Mapping Database
	19	M100 000 Mapping Database

Field	Code	Name
	20	Information from Chinese National Survey and Mapping Bureau
	21	M200 000 Mapping Database
	22	A-K Government Departments
	24	L-Z Government Departments
	26	Information from Government Related Organization
	27	Information from relevant private authority
	28	MISI Partner
	30	Conversion from 1:20 000 hard copy
	32	Low altitude photographic imagery
	34	High altitude photographic imagery
	36	Oblique photographic imagery
	40	Brochure, newspaper or magazine
	42	Local knowledge
	44	Publication from private sector (non-verified data)
	50	Telephone enquiry

<b>Feature</b>	<b>TSPTSMBOL</b>
<b>Geometry File</b>	TSPTSMBOL.gml
<b>Schema File</b>	TSPTSMBOL.xsd
<b>Description</b>	A point geometry storing the points for route name and transportation features.
<b>Geometry Type</b>	Point

Field	Data Type	Length	Byte	Description	Default Value	Is Null
gml:id	String	64		A gml:id is a unique, not null string column used to identify record in table	--	False
ANNOSYMID	Int		4	An integer to identify point record in the feature dataset	NULL	True
CLASS	String	5		An attribute for feature classification	NULL	True
TYPE	String	5		An attribute for feature classification	NULL	True
SUBCAT	String	10		An attribute for sub-classification of feature into a precise type	NULL	True
PHYSICALSTATUS	Int		4	An attribute to indicate the physical status of the feature	NULL	True
LASTUPDATEDATE	String	20		Creation or last modification date of the record	NULL	True
gml:pointProperty	Geometry			The geometry type of the feature	NULL	True
gml:multiPointProperty	Geometry			The geometry type of the feature	NULL	True

**List of Field Values**

<b>Field</b>	<b>Code</b>	<b>Name</b>
PHYSICALSTATUS	1	Proposed
	2	WIP
	3	Active
	4	Prop. Decommissioning
	5	Temp. Suspended
	6	Permanent Closed
	7	Demolished

<b>Table</b>	<b>GeoName</b>
<b>Table File</b>	GeoName.xml
<b>Schema File</b>	GeoName.xsd
<b>Description</b>	An XML storing the attributes for names and coordinates.

Field	Data Type	Length	Byte	Description	Default Value	Is Null
GEONAMEID	Int		4	An integer to identify Geoname record in the feature dataset	--	False
CLASS	String	5		An attribute for feature classification	NULL	True
TYPE	String	50		An attribute for feature classification	NULL	True
SUBCAT	String	10		An attribute for sub-classification of feature into a precise type	NULL	True
PHYSICALSTATUS	Int		4	An attribute to indicate the physical status of the feature	NULL	True
SOURCE	Short		2	Source of data in data collection or conversion	NULL	True
PRIORITY	Short		2	An attribute to indicate level priority of the feature	NULL	True
EASTING	Double		8	Easting coordinate in HK 1980 Grid	NULL	True
NORTHING	Double		8	Northing coordinate in HK 1980 Grid	NULL	True
ENGLISHNAME	String	255		Name of feature in English	NULL	True
CHINESENAME	String	180		Name of feature in Chinese	NULL	True
LASTUPDATEDATE	String	20		Creation or last modification date of the record	NULL	True

**List of Field Values**

<b>Field</b>	<b>Code</b>	<b>Name</b>
PRIORITY	-1	Underground
	0	On Ground
	1	Suppressed
	2	Under Structure/Under
	3	Elevated / Over
	4	Over Podium
	5	Above Service Reservoir
	6	Playground Above
	23	Under Structure + Elevated
	24	Under Structure + Over Podium
	33	Elevated + Elevated
PHYSICALSTATUS	1	Proposed
	2	WIP
	3	Active
	4	Prop. Decommissioning
	5	Temp. Suspended
	6	Permanent Closed
	7	Demolished
SOURCE	1	Geodetic / GPS Data from Lands Department
	3	Gazetted / Deposited Information; Place Names approved by Geographical Place

Field	Code	Name
		Names Board
	4	Geographical Place Names in Hong Kong maintaining by Mapping Information Section, Lands Department
	5	1:1 000 Data
	6	Source from 1:1 000 Data with minor amendment in accordance with information from relevant authority
	7	GS Data / BS Data / Data verified by DSO
	8	Source from GS Data / BS Data with minor amendment in accordance with information from relevant authority
	9	DSO Cadastral Information
	10	M10 000 Mapping Database
	11	Photogrammetric Mapping Data
	13	Geo-Community Database maintaining by LIC
	14	Source from Geo_Community Database with minor amendment in accordance with information from relevant authority
	15	1:5 000 Data
	16	Source from 1:5 000 Data with minor amendment in accordance with information from relevant authority
	17	Ortho-rectified Data
	18	M50 000 Mapping Database
	19	M100 000 Mapping Database

Field	Code	Name
	20	Information from Chinese National Survey and Mapping Bureau
	21	M200 000 Mapping Database
	22	A-K Government Departments
	24	L-Z Government Departments
	26	Information from Government Related Organization
	27	Information from relevant private authority
	28	MISI Partner
	30	Conversion from 1:20 000 hard copy
	32	Low altitude photographic imagery
	34	High altitude photographic imagery
	36	Oblique photographic imagery
	40	Brochure, newspaper or magazine
	42	Local knowledge
	44	Publication from private sector (non-verified data)
	50	Telephone enquiry



<b>Table</b>	<b>Relationship_Table</b>
<b>Table File</b>	Relationship_Table.xml
<b>Schema File</b>	Relationship_Table.xsd
<b>Description</b>	An XML storing the relationship among GRAPHICID, GRAPHICDATASET, ANNOSYMID and GEONAMEID.

Field	Data Type	Length	Byte	Description	Default Value	Is Null
GRAPHICID	Int		4	An integer to identify line or polygon record in the feature dataset	NULL	True
GRAPHICDATASET	String	30		Graphical data from which feature dataset	NULL	True
ANNOSYMID	Int		4	An integer to identify annotation or point record in the feature dataset	--	False
GEONAMEID	Int		4	An integer to identify Geoname record in the feature dataset	--	False